



Soft-ware product  
for connection accounting  
and calculation



TARIF-SSS

**TARIFF-SSS soft-ware package** is designed for traffic registration and rates' compilation on digital switch systems

Package design is in multi-windows style which makes the use of software easy and customary from the very first minute. Information windows can be switched with the help of hot-keys or navigation panels.

№	Набранный номер	Направление	Регион	Дата	Начало	Длит.	Сумма
194	8-8(812)264-24-20	Краснодар	Краснодарский край	03.08.01	14:20:01	0:00:02	0.12
222	8-8(812)220-28-92	Санкт-Петербург	Ленинградская область	03.08.01	14:21:14	0:00:00	0.00
190	8-8(812)220-28-92	Санкт-Петербург	Ленинградская область	03.08.01	14:20:51	0:00:29	0.00
222	8-8(812)220-28-92	Санкт-Петербург	Ленинградская область	03.08.01	14:21:52	0:00:48	17.18
122	8-8(812)220-28-92	Санкт-Петербург	Ленинградская область	03.08.01	14:21:56	0:00:05	0.00
122	8-8(812)220-28-92	Санкт-Петербург	Ленинградская область	03.08.01	14:21:56	0:00:09	0.00
122	8-8(812)220-28-92	Санкт-Петербург	Ленинградская область	03.08.01	14:21:56	0:00:30	0.95
222	8-8(812)220-28-92	Санкт-Петербург	Ленинградская область	03.08.01	14:21:57	0:00:38	2.84
122	8-8(812)220-28-92	Санкт-Петербург	Ленинградская область	03.08.01	14:21:16	0:00:52	0.00
122	8-8(812)220-28-92	Санкт-Петербург	Ленинградская область	03.08.01	14:20:29	0:00:38	0.00
222	8-8(812)220-28-92	Санкт-Петербург	Ленинградская область	03.08.01	14:21:19	0:00:01	0.07
222	116	внутренний	внутренняя АТС	03.08.01	14:20:59	0:00:09	0.00
222	124	внутренний	внутренняя АТС	03.08.01	14:20:22	0:00:23	0.00
122	8-8(812)220-28-92	Санкт-Петербург	Ленинградская область	03.08.01	14:20:26	0:00:38	3.25
122	8-8(812)220-28-92	Санкт-Петербург	Ленинградская область	03.08.01	14:21:10	0:00:28	2.84
122	8-8(812)220-28-92	Санкт-Петербург	Ленинградская область	03.08.01	14:21:08	0:00:06	0.81
122	8-8(812)220-28-92	Санкт-Петербург	Ленинградская область	03.08.01	14:21:28	0:00:08	0.81
122	8-8(812)220-28-92	Санкт-Петербург	Ленинградская область	03.08.01	14:21:55	0:00:09	0.50
122	8-8(812)220-28-92	Санкт-Петербург	Ленинградская область	03.08.01	14:21:20	0:00:08	0.81

Several standard modifications of TARIF-SSS package are available:  
TARIF-SSS/Office  
TARIF-SSS/Hotel  
TARIF-SSS/Pro.

Package can be customized and supplied in accordance with Customer's specific requirements.

Calculation centre is the basis of whole package and employs original accounting algorithms performing no less than 1,200 records' calculations per second (on Pentium 166 based computers). Possibility of concurrent work of rates' compilation schemes of different providers is integrated. Six variants for results round-off are used.

Package of any modification possesses the functions of detailed destination analysis of dialed number up to particular localities.

Call journal samples:

№	Вызов	Направление	Дата	Начало	Длит.	Сумма
213	883123385693	Нижегородская область	09.01.00	18:32:47	0:02:49	12.90
240	88612375805	Краснодарский край	28.04.00	21:06:17	0:04:22	16.59
217	88125544544	Санкт-Петербург	23.05.00	2:07:08	0:02:54	17.69
259	88722665118	Дагестан	23.05.00	3:25:52	0:03:25	15.64
240	88616767028	Краснодарский край	25.05.00	17:23:38	0:04:04	15.45
217	80876320344	Тульская область	28.05.00	13:25:23	0:01:34	7.17
217	80876392239	Тульская область	28.05.00	13:32:25	0:01:29	6.79
217	80876320344	Тульская область	28.05.00	14:52:51	0:01:44	7.93

call destination analysis on

№	Набранный номер	Направление	Регион	Дата	Начало	Длит.	Сумма
213	8-8(812)33-85-69	Нижегород	Нижегородская область	09.01.00	18:32:47	0:02:49	12.90
240	8-8(8612)37-58-05	Краснодар	Краснодарский край	28.04.00	21:06:17	0:04:22	16.59
217	8-8(812)55-44-54	Санкт-Петербург	Ленинградская область	23.05.00	2:07:08	0:02:54	17.69
259	8-8(8722)66-51-18	Махачкала	Дагестан	23.05.00	3:25:52	0:03:25	15.64
240	8-8(8616)76-70-28	Туапсе	Краснодарский край	25.05.00	17:23:38	0:04:04	15.45
217	8-8(0876)32-03-44	Суворов	Тульская область	28.05.00	13:25:23	0:01:34	7.17
217	8-8(0876)39-22-39	Суворов	Тульская область	28.05.00	13:32:25	0:01:29	6.79
217	8-8(0876)32-03-44	Суворов	Тульская область	28.05.00	14:52:51	0:01:44	7.93

call destination analysis off

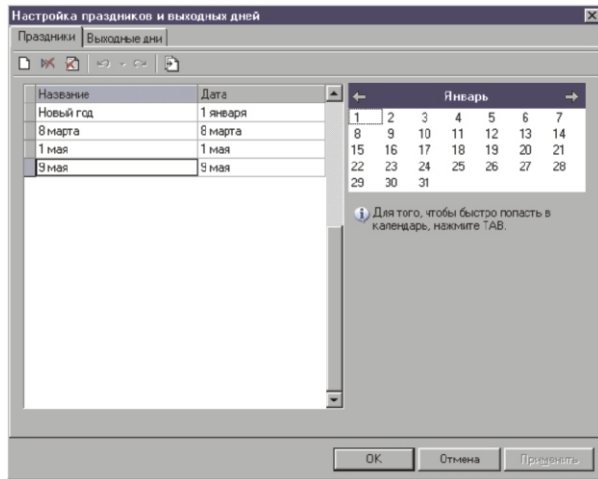
TARIFF-SSS supports any formats of intercity and international line access indexes.

Call cost and its type (internal, incoming local, outgoing local, intercity, etc) are automatically determined for any new connection record.



# TARIF-SSS

Compilation of rates is performed in accordance with cost plan of the time when the call was performed: time of the day, days off, holydays.



For better perception different colour schemes are applied to journal lines containing data on different types of calls. Adjustable colour pallets are provided.

If the system data base doesn't contain information on particular town, rates are taken from regional rate data base. Despite the lack of information on particular locality, rates' compilation is fulfilled correctly because one zone tariff is applied to all call directions in this zone.

**Call corrector** function allows manual regime of call direction adjustments if a name of a town is not specified in automatic mode.

If in automatic mode the programme doesn't succeed in rates' compilation, call's details are filed up in uncalculated calls journal.

444 0-8(073)662-1069 Воронежская область. Воронежская область. 24.01.01 14.35.22 0.05.06 19.38

Mixed numeration support for the same town (eg.: 5- or 6-digit local numbers) is provided.

**Search journal** utility is included into the programme. Sample search option (by particular town or country, service operator) allows fast transfer to required call record.

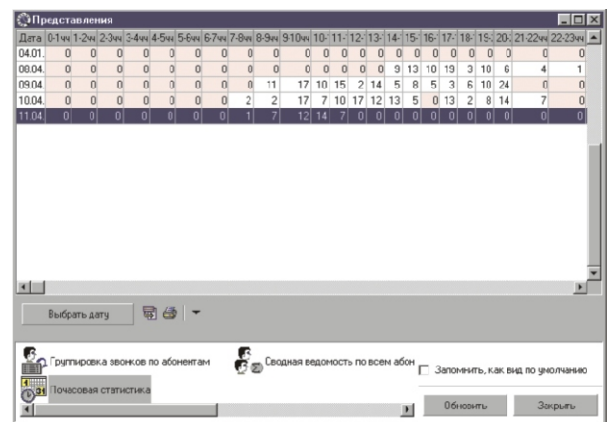
# LABYRINTH SOLUTIONS

For tandem exchanges **TARIF-SSS package** compiles rates for transit connections, forms lists and prepares accounting forms for attached exchanges' calls, rates paid incoming calls. The programme automatically prepares statistical reports and sample data captures.

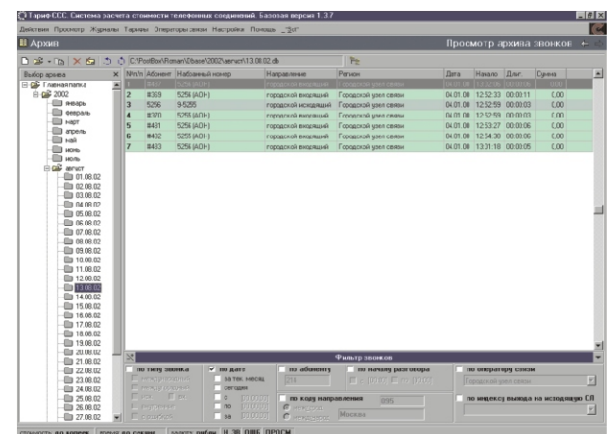


**TARIF-SSS** provides operators with the capability to print out different report forms: from simple receipts to report forms on subscribers' group or complex search results.

The programme also generates reports for the accounting period.



The programme uses **Archival service** to facilitate the handling of large data masses. Besides manual archiving of tariff information, the mechanisms of every day and determined time period archiving are employed. Archival service interface is specially optimized to manage a large amount of archival files.



## EXCLUSIVE EXPORTER:

Labyrinth VoIP & Telecoms Solutions  
Phone: +357 26 222793  
Fax: +357 26 813754  
Email: sales@labyrinth-voip.com  
www.labyrinth-voip.com

## LABYRINTH VOIP & TELECOMS SOLUTIONS

Labyrinth VoIP & Telecommunications Solutions is the trade name for Bachmanco Holdings Company Limited, a European company registered in Cyprus and located at Ground Floor, No. 3 Andrea Michaelidi Street, 8020 Paphos, Cyprus.